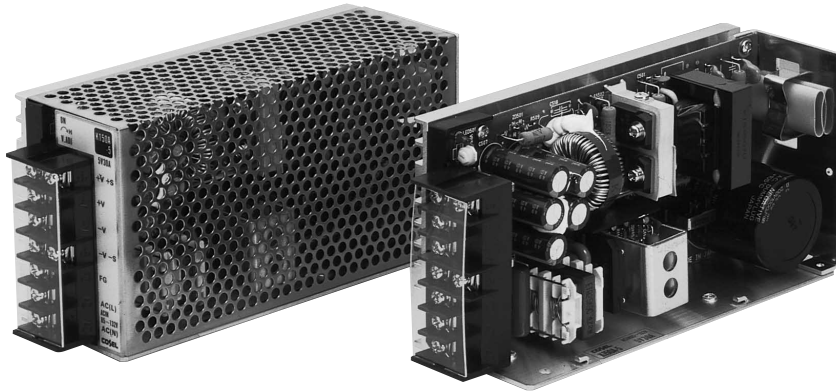


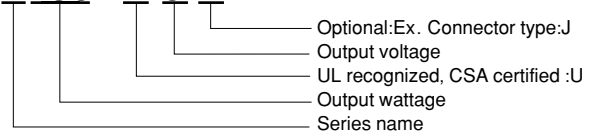
K



- Small size
- UL recognized, CSA certified
- Built-in inrush current, overcurrent and overvoltage protection circuits
- Two-year warranty

ORDERING INFORMATION

K150A **-5-**



SPECIFICATIONS

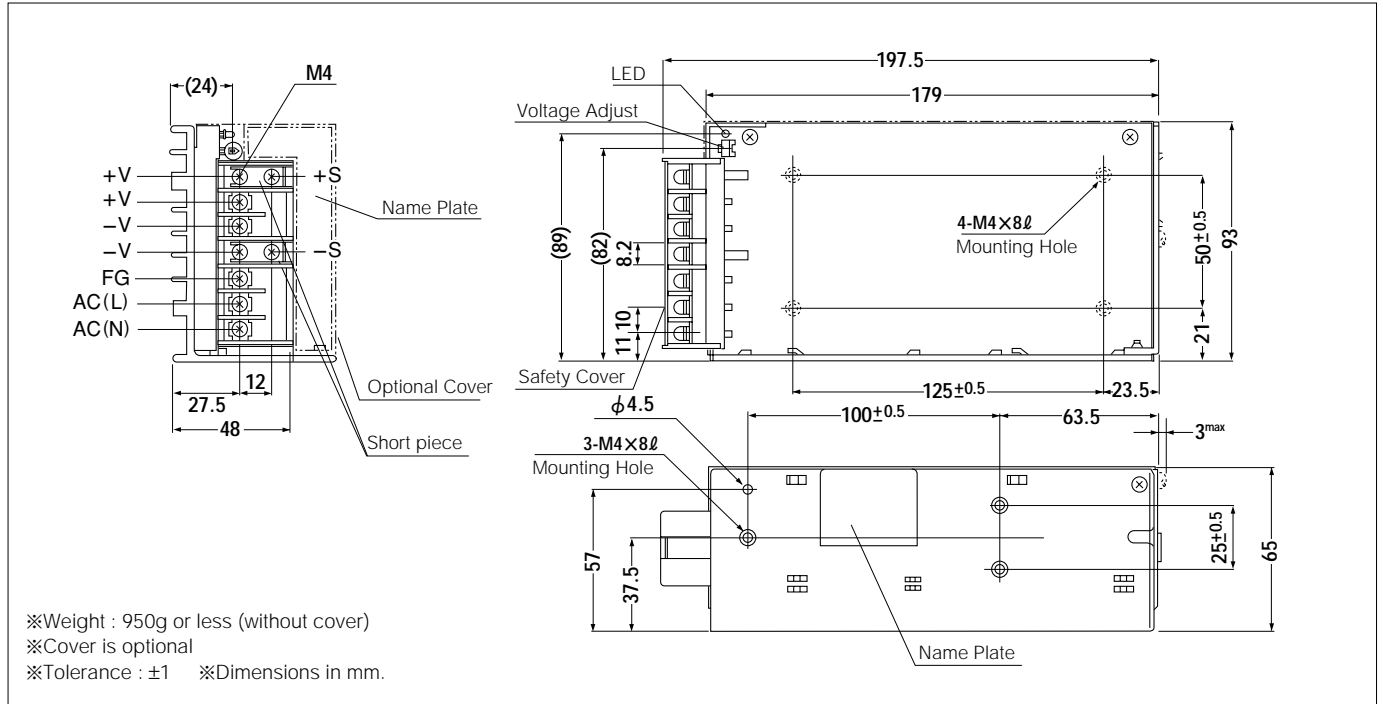
	MODEL	K150A-5	K150A-12	K150A-15	K150A-24
INPUT	VOLTAGE/ CURRENT	AC85~132V 1 ϕ or DC110~170V / 3.0A typ (ACIN 100V, lo=100%)			
	FREQUENCY	47~440Hz or DC			
	INRUSH CURRENT	25A typ (ACIN 100V, lo=100%)			
	EFFICIENCY	77% typ	80% typ	82% typ	84% typ
OUTPUT	VOLTAGE [V]	5	12	15	24
	CURRENT [A]	30.0	13.0	10.0	6.5
	WATTAGE [W]	150.0	156.0	150.0	156.0
	LINE REGULATION [mV]	20max	48max	60max	96max
	LOAD REGULATION [mV]	40max	100max	120max	150max
	RIPPLE [mVp-p]	80max	120max	120max	120max
	RIPPLE NOISE [mVp-p]	120max	150max	150max	150max
	TEMPERATURE COEFFICIENT 0~+50°C [mV]	50max	120max	150max	240max
	OUTPUT VOLTAGE ADJUSTMENT RANGE	$\pm 10\%$			
	START-UP TIME [mS]	200max (ACIN 85V, lo=100%)			
HOLD-UP TIME [mS]	16typ (ACIN 85V, lo=100%)				
PROTECTION CIRCUITS	OVERCURRENT PROTECTION	Works over 105% of rating and recovers automatically			
	OVERVOLTAGE PROTECTION	Works at 115~140% of rating			
ISOLATION	INPUT-FG,OUTPUT	AC2000V, 1minute, DC500V, 50M Ω min. (At Room Temperature)			
	OUTPUT-FG	AC 500V, 1minute, DC500V, 50M Ω min. (At Room Temperature)			
ENVIRONMENT	OPERATING TEMP. AND HUMID.	0~+70°C, 30~90%RH (Non condensing) (Refer to DERATING CURVE)			
	STORAGE TEMP. AND HUMID.	-20~+75°C, 20~90%RH (Non condensing)			
	VIBRATION	10~55Hz 2G, 3 minutes period, 30 minutes along X, Y and Z axis			
	IMPACT	10G, 20mS, once each X, Y and Z axis			
SAFETY AND NOISE REGULATIONS	SAFETY REGULATIONS	Recognized UL1950 (D3), certified CSA Electrical Bulletin No. 1402C			
	CONDUCTED NOISE	Complies with FCC-A			

※ Avoid prolonged use under over-load.
 ※ Derating is required when operated with case cover.
 ※ Parallel operation with other model is not possible.

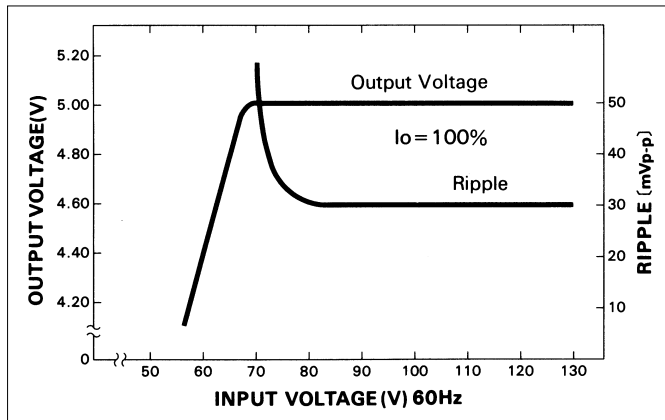
MODEL	K150A-5	K150A-12	K150A-15	K150A-24
OUTPUT VOLTAGE [V]	5	12	15	24
OUTPUT CURRENT [A]	30.0	13.0	10.0	6.5

K

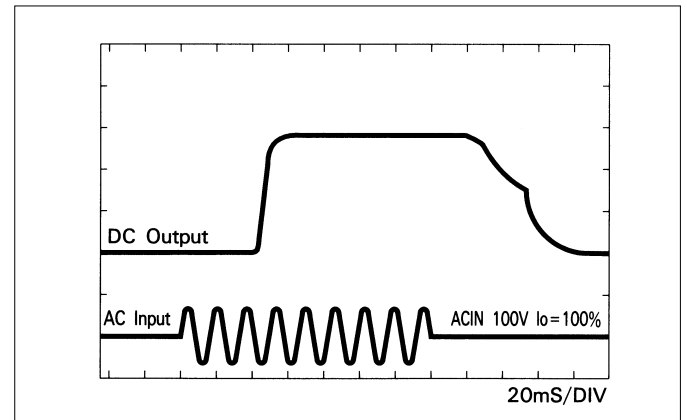
EXTERNAL VIEW



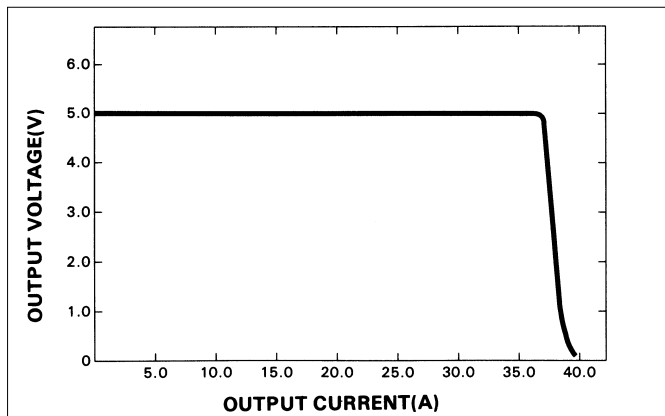
STATIC CHARACTERISTICS (K150A-5)



RISE TIME & FALL TIME (K150A-5)



OVERCURRENT CHARACTERISTICS (K150A-5)



DERATING CURVE

